



MASON INDUSTRIES, Inc.

Manufacturers of Vibration Control Products

350 Rabro Drive
Hauppauge, NY 11788
631/348-0282
FAX 631/348-0279

2101 W. Crescent Ave., Suite D
Anaheim, CA 92801
714/535-2727
FAX 714/535-5738

Info@Mason-Ind.com • www.Mason-Ind.com

**WJ2, WJ3,
ML, MLS, R,
RL, RC & RCL**

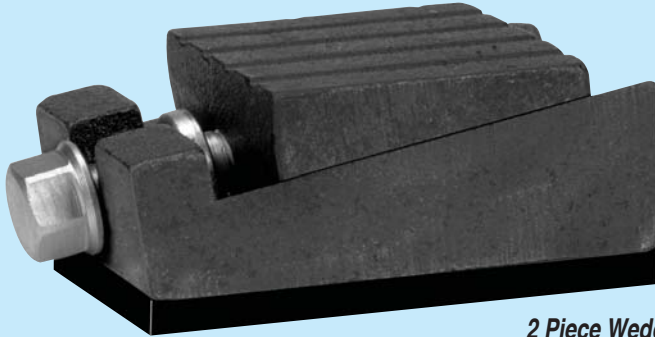
WEDGE JACKS & LEVELING MOUNTS

BULLETIN WJ-222-3

WJ- Machine Leveling Wedge Jacks

Of all the leveling devices, Wedge Jacks provide the most rigid support after adjustment. All jacks have mating parts with spherical seats that allow automatic adjustment for up to 7° of transverse compensation for uneven floors. The wedges move readily in response to turning the adjustment bolts.

Jacks are furnished without pads for leveling only or with 1/2" **13mm** thick oil resistant pads underneath to provide friction and vibration isolation. Economical two piece jacks have no provision for bolting. Equipment moves front to back during adjustment. Three piece jacks have a through hole for bolting and equipment moves only up and down during adjustment.

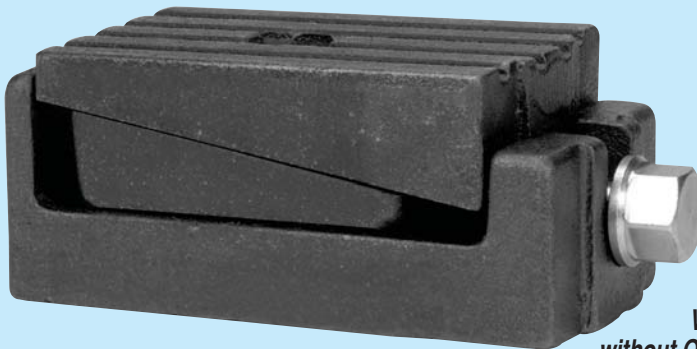


*2 Piece Wedge Jack
with Optional Pad*

WJ2- 2 piece Wedge Jacks- No Bolting

Type	Capacity (lbs) (kgs)	Length (in)(mm)	Width (in)(mm)	Height		Rise (in)(mm)
				No Pad (in)(mm)	with Pad (in)(mm)	
WJ2A	3000 1361	6 152	3 1/2 89	1 1/8 29	—	1/4 6
WJ2AP*	3000 1361	6 152	3 1/2 89	—	1 5/8 41	1/4 6
WJ2B	9000 4082	6 152	3 1/2 89	2 1/8 54	—	3/8 10
WJ2BP*	9000 4082	6 152	3 1/2 89	—	2 5/8 67	3/8 10

* 'P' indicates with 1/2" Neoprene Pad.

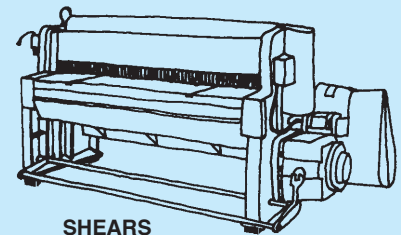


*3 Piece
Wedge Jack
without Optional Pad*

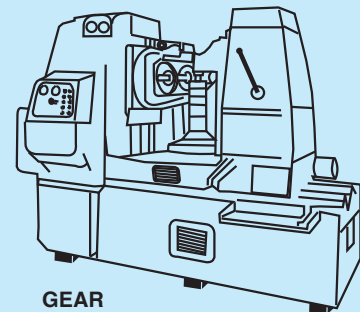
WJ3- 3 piece Wedge Jacks- Provision for Bolting

Type	Capacity (lbs) (kgs)	Length (in)(mm)	Width (in)(mm)	Height		Max. Anchor		Rise (in)(mm)
				No Pad (in)(mm)	with Pad (in)(mm)	Bolt Dia. (in)(mm)		
WJ3A	15,000 6804	6 152	3 1/2 89	2 1/2 64	—	1 25	1/4 6	
WJ3AP*	15,000 6804	6 152	3 1/2 89	—	3 76	1 25	1/4 6	
WJ3B	20,000 9072	6 5/8 168	3 1/2 89	2 3/4 70	—	1 25	3/8 10	
WJ3BP*	20,000 9072	6 5/8 168	3 1/2 89	—	3 1/4 83	1 25	3/8 10	
WJ3C	30,000 13608	6 5/8 168	3 1/2 89	2 3/4 70	—	1 25	3/8 10	
WJ3CP*	30,000 13608	6 5/8 168	3 1/2 89	—	3 1/4 83	1 25	3/8 10	

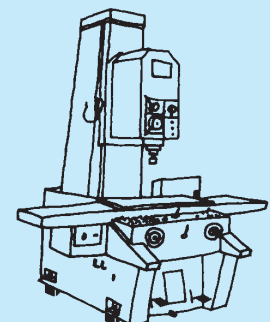
* 'P' indicates with 1/2" **13mm** Neoprene Pad as under WJ2 Series above.



SHEARS



GEAR
HOBBER



VERTICAL MILL